



One Courthouse Square,  
Jasper, IN 47546  
p. (812) 481-7035 f. (812)  
481-7038  
[www.duboiscountyin.org](http://www.duboiscountyin.org)

# DUBOIS COUNTY VOTE CENTER PLAN

# **DUBOIS COUNTY VOTE CENTER PLAN**

## **TABLE OF CONTENTS**

<b>MESSAGE FROM CLERK</b>	<b>3</b>
<b>VOTE CENTER STUDY COMMITTEE</b>	<b>4</b>
<b>VOTE CENTER EDUCATION &amp; OUTREACH</b>	<b>5</b>
<b>COMPLIANCE CHECKLIST</b>	<b>8</b>
<b>VOTE COUNTS &amp; TALLY REPORTS</b>	<b>10</b>
<b>PRECINCT LIST</b>	<b>16</b>
<b>POLLING LOCATIONS AND HOURS OF OPERATION</b>	<b>17</b>
<b>ACCESSIBILITY CERTIFICATION</b>	<b>19</b>
<b>VOTE CENTER LAYOUT</b>	<b>20</b>
<b>POLL WORKERS</b>	<b>22</b>
<b>EQUIPMENT &amp; TECHNOLOGY</b>	<b>23</b>
<b>SECURITY &amp; CONTINGENCY PLAN</b>	<b>24</b>
<b>APPROVAL ORDER &amp; RESOLUTIONS</b>	<b>25</b>

Amy L. Kippenbrock  
Clerk of The Dubois County Courts  
Circuit Court / Superior Court  
One Courthouse Square  
Jasper, IN 47546

#### MESSAGE FROM THE CLERK

Citizens of Dubois County,

Since the vote center concept became a reality in Indiana elections in 2011, leaders in Dubois County have evaluated the benefit to voters, county budgets and on the election process.

The following pages layout out our plan to make vote centers a reality in Dubois County. The vote center concept gives any voter in Dubois County the opportunity to cast their ballot at any vote center location throughout the county. No one is restricted to one polling location on Election Day. In addition to making it easier for voters on Election Day, the vote center concept also provides early voting opportunities at what are called “satellite vote centers” that are open prior to Election Day. Just as you know it today.

The most frequent questions we hear in an election are “Where is my polling place?” or “Why can’t I just vote at the polling place across from where I work or drop off the kids for school?” A common complaint is “I can’t make it back to the polls by 6:00 p.m. on Election Day.” Vote centers address these common voter concerns.

By moving to vote centers, voter convenience is improved; voter turnout will increase; election administration is streamlined and made simpler and improves the county’s long-term fiscal stance for elections.

I want to thank all the wonderful people who have provided feedback at our meetings to this point and worked so hard, and in a bipartisan manner, to move the county toward Vote Centers. A thank you also goes out to all the locations that have been willing to allow us to utilize their facilities as Vote Centers in our past and future elections as we are forever grateful.

Thank you,

Amy Kippenbrock  
Dubois County Clerk

## **VOTE CENTER STUDY COMMITTEE**

**Roger Messmer, President Election Board (R)**

**Amy Kippenbrock, Secretary Election Board, County Clerk (R)**

**John Birk, Member Election Board (D)**

**Kitty Merkley, Dubois Co. Party Chair (R)**

**Mike Kendall, Dubois Co. Party Chair (D)**

**Becky Beckman, County Councilwoman (D), Poll Worker**

**Shelly Whalen, Poll Worker, GJCS School district**

**Gary Van Winkle, Poll Worker, SE School district**

**Bernie Jeffries, Poll Worker, NE School district**

**Nick Hostetter, Dubois Co. Commissioner (R)**

**Steve McPherron, Huntingburg City Council Member (R), SW School district**

**Rossina Sandoval Monsivais, Dir. Of Community Engagement, SW School district**

## **GOALS OF COMMITTEE:**

**REVIEW LOCATIONS**

**PUBLIC OUTREACH PLAN**

**PUBLIC INPUT – TWO MEETINGS**

## **VOTE CENTER EDUCATION & OUTREACH**

Outreach –

Educational Flyer made for 2022 –

- Information about vote center change.
- Information about why, who, where to vote; how to register.
- Information about election cycles, finding candidate information.
- Information on Early Voting locations.
- Information on Election Day locations.

Pass Flyer to:

- Media
- Schools
- Churches
- Community Bulletin Boards – Grocery Stores, Ball Field Concession Stands, banks, etc.
- City, Town and County Councils
- Current Elected Officials
- Candidates running for office
- County Party Chairs

Media – radio, newspaper partners to pass information to voters.

Can do story about subject of Vote Center

Social Media – county face book page

County web site





# Vote

## Dubois County 2022

### WHERE DO I VOTE?

Any registered Dubois County voter may vote at any open site!

#### WHY VOTE?

It's your voice directly impacting our community. Voting empowers you to elect those who best represent your interests.

#### WHO IS ELIGIBLE?

- Those both a US citizen and resident of Indiana
- Those who will be at least 18 years of age on or before the next election
- Those currently not in prison after being convicted of a crime

#### WHERE TO REGISTER TO VOTE:

- [www.indianavoters.com](http://www.indianavoters.com)
- Bureau of Motor Vehicles
- Dubois County Clerk's office

#### FIND CANDIDATE INFO:

- [www.indianavoters.com](http://www.indianavoters.com)
  - [www.wayeo.com](http://www.wayeo.com)
- (Who Are Your Elected Officials)

#### Early Voting Sites:

**Courthouse Annex**  
 One Courthouse Square, Jasper  
 Month prior to election:  
 Monday - Friday: 8am - 4pm  
 Wednesday: 8am - 6pm  
 Saturdays: 8am - 3pm

**Tri-County YMCA**  
 1710 Community Dr., Ferdinand  
 2 Saturdays prior to election:  
 Saturdays: 8am - 3pm

**Huntingburg Event Center**  
 110 East 14th St., Huntingburg  
 2 Saturdays prior to election:  
 Saturdays: 8am - 3pm

**35th Str. Fire Station**  
 118 E. 35th St., Jasper  
 Week before election & 2 Saturdays prior:  
 Monday - Friday: 10am - 6pm  
 Saturdays: 8am - 3pm

#### Roaming Board Sites: Week before election: 10am - 6pm

- Monday, St. Henry CK of A
- Tuesday, Haysville Fire Station
- Wednesday, Schnellville Fire Station
- Thursday, Dubois Library
- Friday, Birdseye Fire Station

#### Election Day Sites: 6am - 6pm

**Jasper Middle School**  
 1600 St Charles St., Jasper

**Thyen-Clark Cultural Center-Atrium**  
 100 3rd Ave., Jasper

**St Mary's Community Center**  
 2829 N 500 W, Jasper

**Huntingburg Event Center**  
 110 East 14th St., Huntingburg

**Holland United Methodist Church**  
 205 2nd Ave., Holland

**Tri-County YMCA**  
 1710 Community Dr., Ferdinand

**Celestine Community Center**  
 7742 E Ellsworth Rd., Celestine

**St. Anthony Community Center**  
 4665 S Cross St., St Anthony

**Dubois Ruritan Park**  
 5430 E Jasper Dubois Rd., Dubois





# Vota

## Condado de Dubois 2022

### ¿EN DÓNDE PUEDO VOTAR?

¡Cualquier votante registrado de Dubois County puede votar en cualquier sitio abierto!

#### Lugares para votar antes de la elección:

**Courthouse Annex**  
One Courthouse Square, Jasper  
Un mes antes de la elección  
Lunes - viernes: 8am - 4pm  
Miércoles: 8am - 6pm  
Sábados: 8am - 3pm

**Tri-County YMCA**  
1710 Community Dr., Ferdinand  
2 sábados antes de la elección  
Sábados: 8am - 3pm

**Huntingburg Event Center**  
110 East 14th St., Huntingburg  
2 sábados antes de la elección  
Sábados: 8am - 3pm

**35th Str. Fire Station**  
118 E. 35th St., Jasper  
Una semana antes y 2 sábados antes  
Lunes - viernes: 10am - 6pm  
Sábados: 8am - 3pm

#### Consejo Móvil: La semana antes las elecciones: 10am - 6pm

- Lunes, St. Henry CK of A
- Martes, Haysville Fire Station
- Miércoles, Schnellville Fire Station
- Jueves, Dubois Library
- Viernes, Birdseye Fire Station

#### Diá de Elecciones: 6am - 6pm

**Jasper Middle School**  
1600 St Charles St., Jasper

**Thyen-Clark Cultural Center-Atrium**  
100 3rd Ave., Jasper

**St Mary's Community Center**  
2829 N 500 W, Jasper

**Huntingburg Event Center**  
110 East 14th St., Huntingburg

**Holland United Methodist Church**  
205 2nd Ave., Holland, IN 47541

**Tri-County YMCA**  
1710 Community Dr., Ferdinand

**Celestine Community Center**  
7742 E Ellsworth Rd., Celestine

**St. Anthony Community Center**  
4665 S Cross St., St Anthony

**Dubois Ruritan Park**  
5430 E Jasper Dubois Rd., Dubois

### ¿POR QUÉ VOTAR?

Es tu voz la que impacta directamente en nuestra comunidad. La votación le permite elegir a quienes mejor representen sus intereses.

### ¿QUIÉN PUEDE VOTAR?

- Aquellos que son ambos: ciudadanos estadounidenses y residentes de Indiana
- Aquellos que tengan al menos 18 años de edad en o antes de las próximas elecciones.
- Aquellos que actualmente no están en prisión después de haber sido condenados por un delito.

### ¿CÓMO REGISTRARSE PARA VOTAR?

- [www.Indianavoters.com](http://www.Indianavoters.com)
- Oficina de Vehículos Motorizados BMV
- Oficina del secretario del condado de Dubois

### ENCONTRAR INFORMACIÓN DEL CANDIDATO:

- [www.Indianavoters.com](http://www.Indianavoters.com)
- [www.wayeo.com](http://www.wayeo.com)  
(Quienes son tus Oficiales Electos)



## I.C. 3-11-18.1-4 COMPLIANCE CHECKLIST

The following 17 items are the requirements for a vote center plan as defined in Indiana Code 3-11-18.1-4. Following each of the 17 requirements are page listed references where in this Dubois County Vote Center Plan the particular requirement(s) is met.

1. The total number of Vote Centers to be established.
2. The location of each Vote Center.
3. The effective date of the order.
4. The following information, according to the generated computerized list (as defined in I.C. 3-7-26.3-2) as the date order: (A) the total number of voters within the county. (B) The number of active voters in the county. (C) The number of inactive voters within the county.
5. For each vote center designation under subdivision (2), as a list of the precincts whose polls will be located at the vote center consistent with subsection 13 (I.C. 3-11-18.1-13) of this chapter.
6. For each vote center designated under subdivision (2), the number of vote center election boards that will be appointed to administer an election at the vote center.
7. For each precinct election board designated under subdivision (2), the number and name of each precinct the precinct election board will administer consistence with section 13 of this chapter.
8. For each vote center designated under subdivision (2), the number and title of the vote center election officers who will be appointed to serve at the vote center.
9. For each vote center designated under subdivision (2): (A) the number and type of ballot variations that will be provided at the voter center; and (B) whether these ballots will be: (I) delivered to the vote center before the opening of the polls; or (II) printed on demand for a voter's use.
10. A detailed description of any hardware, firmware or software used; (A) to create an electronic poll list for each precinct whose polls are to be located at a vote center; or (B) to establish a secure electronic connection between the county election board and the precinct election officials administering a vote center.
11. A description of the equipment and procedure to be used to ensure that information concerning a vote entered into any electronic poll list used by a precinct officer at a vote center is immediately accessible to (A) the county election board; and (B) the electronic poll list used by precinct election officers at all other vote centers in the county.
12. For each precinct designated under subdivision (5), the number of electronic poll lists to be provided for the precinct.
13. The security and contingency plan to be implemented by the county to do all of the following: (A) prevent a disruption of the vote center process. (B) ensure that the election is properly conducted if a disruption occurs. (C) prevent access to an electronic poll list without the coordinated action of the two (2) precinct election officers who are not members of the same political party.
14. A certification that the vote center complies with the accessibility requirements applicable to polling places under I.C. 3-11-18.1.
15. A sketch depicting the planned layout of the vote center, indicating the location of: (A) equipment; and (B) precinct election officers; within the vote center.
16. The total number and locations of satellite offices to be established under I.C. 3-11-10-26.3 at vote center locations designated under subdivision (2) to allow voters to cast absentee ballots in accordance with I.C. 3-11. However, a plan must provide for at least one (1) vote center to be established as an early vote center office under I.C. 3-11-10-26.3 on the two (2) Saturdays immediately preceding an election day.

17. The method and timing of providing voter data to persons who are entitled to receive data under this title. Data shall be provided to all persons entitled to the data without unreasonable delay.

## State of Indiana Voter Status Counts by Precinct and Split DUBOIS COUNTY

Precinct	Split	Active	Inactive	Total Current Voters	Pending	Incomplete
<b>BAINBRIDGE 1</b>						
	0	493	17	510	0	0
	1	53	2	55	0	0
		<b>Precinct Subtotal</b>	<b>546</b>	<b>565</b>	<b>0</b>	<b>0</b>
<b>BAINBRIDGE 2E</b>						
	0	710	111	821	6	0
		<b>Precinct Subtotal</b>	<b>710</b>	<b>821</b>	<b>6</b>	<b>0</b>
<b>BAINBRIDGE 2W</b>						
	0	1,333	63	1,396	1	0
		<b>Precinct Subtotal</b>	<b>1,333</b>	<b>1,396</b>	<b>1</b>	<b>0</b>
<b>BAINBRIDGE 3E</b>						
	0	983	106	1,089	1	0
		<b>Precinct Subtotal</b>	<b>983</b>	<b>1,089</b>	<b>1</b>	<b>0</b>
<b>BAINBRIDGE 3W</b>						
	0	1,023	44	1,067	9	0
		<b>Precinct Subtotal</b>	<b>1,023</b>	<b>1,067</b>	<b>9</b>	<b>0</b>
<b>BAINBRIDGE 4N</b>						
	0	986	84	1,070	1	0
		<b>Precinct Subtotal</b>	<b>986</b>	<b>1,070</b>	<b>1</b>	<b>0</b>
<b>BAINBRIDGE 4S</b>						
	0	853	44	897	3	0
		<b>Precinct Subtotal</b>	<b>853</b>	<b>897</b>	<b>3</b>	<b>0</b>
<b>BAINBRIDGE 5N</b>						
	0	885	131	1,016	3	0
		<b>Precinct Subtotal</b>	<b>885</b>	<b>1,016</b>	<b>3</b>	<b>0</b>
<b>BAINBRIDGE 5S</b>						
	0	874	88	962	2	0
		<b>Precinct Subtotal</b>	<b>874</b>	<b>962</b>	<b>2</b>	<b>0</b>
<b>BAINBRIDGE 6N</b>						
	0	872	69	941	4	0
		<b>Precinct Subtotal</b>	<b>872</b>	<b>941</b>	<b>4</b>	<b>0</b>

## State of Indiana Voter Status Counts by Precinct and Split

Precinct	Split	Active	Inactive	Total Current Voters	Pending	Incomplete
BAINBRIDGE 6S	0	1,012	56	1,068	3	0
		<b>Precinct Subtotal</b>	<b>56</b>	<b>1,068</b>	<b>3</b>	<b>0</b>
BAINBRIDGE 7	0	665	44	709	3	0
		<b>Precinct Subtotal</b>	<b>44</b>	<b>709</b>	<b>3</b>	<b>0</b>
BOONE - JASPER	BNEJAS	118	3	121	2	0
		<b>Precinct Subtotal</b>	<b>3</b>	<b>121</b>	<b>2</b>	<b>0</b>
BOONE 1	0	543	27	570	4	0
		<b>Precinct Subtotal</b>	<b>27</b>	<b>570</b>	<b>4</b>	<b>0</b>
CASS 1	0	363	57	420	9	0
		<b>Precinct Subtotal</b>	<b>57</b>	<b>420</b>	<b>9</b>	<b>0</b>
CASS 2	0	474	21	495	10	0
		<b>Precinct Subtotal</b>	<b>21</b>	<b>495</b>	<b>10</b>	<b>0</b>
CASS 3	0	617	29	646	4	0
		<b>Precinct Subtotal</b>	<b>29</b>	<b>646</b>	<b>4</b>	<b>0</b>
COLUMBIA 1	0	726	34	760	9	0
		<b>Precinct Subtotal</b>	<b>34</b>	<b>760</b>	<b>9</b>	<b>0</b>
FERDINAND 1	0	860	47	907	1	0
		<b>Precinct Subtotal</b>	<b>47</b>	<b>907</b>	<b>1</b>	<b>0</b>
FERDINAND 2	0	615	64	679	4	0
		<b>Precinct Subtotal</b>	<b>64</b>	<b>679</b>	<b>4</b>	<b>0</b>



## State of Indiana Voter Status Counts by Precinct and Split

Precinct	Split	Active	Inactive	Total Current Voters	Pending	Incomplete
FERDINAND 3	0	1,100	32	1,132	7	0
		<b>Precinct Subtotal</b>	<b>1,100</b>	<b>1,132</b>	<b>7</b>	<b>0</b>
HALL 1	0	902	36	938	1	0
		<b>Precinct Subtotal</b>	<b>902</b>	<b>938</b>	<b>1</b>	<b>0</b>
HARRISON 1	0	595	17	612	1	0
		<b>Precinct Subtotal</b>	<b>595</b>	<b>612</b>	<b>1</b>	<b>0</b>
HARRISON 2	0	539	33	572	2	0
		<b>Precinct Subtotal</b>	<b>539</b>	<b>572</b>	<b>2</b>	<b>0</b>
JACKSON 1	0	685	26	711	1	0
		<b>Precinct Subtotal</b>	<b>685</b>	<b>711</b>	<b>1</b>	<b>0</b>
JACKSON 2	0	875	27	902	0	0
		<b>Precinct Subtotal</b>	<b>875</b>	<b>902</b>	<b>0</b>	<b>0</b>
JEFFERSON 1	0	806	29	835	3	0
		<b>Precinct Subtotal</b>	<b>806</b>	<b>835</b>	<b>3</b>	<b>0</b>
JEFFERSON 2	0	239	15	254	1	0
		<b>Precinct Subtotal</b>	<b>239</b>	<b>254</b>	<b>1</b>	<b>0</b>
MADISON 1	0	584	16	600	3	0
		<b>Precinct Subtotal</b>	<b>584</b>	<b>600</b>	<b>3</b>	<b>0</b>
MADISON 2	0	1,060	68	1,128	4	0
		<b>Precinct Subtotal</b>	<b>1,060</b>	<b>1,128</b>	<b>4</b>	<b>0</b>

## State of Indiana Voter Status Counts by Precinct and Split

Precinct	Split	Active	Inactive	Total		Pending	Incomplete
				Current Voters	Voters		
MADJAS NORTH	JASPER 3	453	26	479	3	0	0
	Precinct Subtotal	453	26	479	3	0	0
MADJAS SOUTH	JASPER 2	70	1	71	0	0	0
	Precinct Subtotal	70	1	71	0	0	0
MARION 1		263	20	283	1	0	0
	Precinct Subtotal	263	20	283	1	0	0
MARION 2		735	25	760	1	0	0
	Precinct Subtotal	735	25	760	1	0	0
PATOKA 1		863	75	938	1	0	0
	Precinct Subtotal	863	75	938	1	0	0
PATOKA 2		937	80	1,017	4	0	0
	Precinct Subtotal	937	80	1,017	4	0	0
PATOKA 3		788	84	872	2	0	0
	Precinct Subtotal	788	84	872	2	0	0
PATOKA 4		603	105	708	4	0	0
	Precinct Subtotal	603	105	708	4	0	0
PATOKA 5		314	14	328	1	0	0
	Precinct Subtotal	314	14	328	1	0	0
PATOKA 6		754	31	785	1	0	0
	Precinct Subtotal	754	31	785	1	0	0
<b>DUBOIS County Totals</b>	(15809 Total Cancelled)	<b>28,223</b>	<b>1,901</b>	<b>30,124</b>	<b>120</b>	<b>0</b>	<b>0</b>

## HIGHEST RECENT VOTER TURN OUT

### 2020 GENERAL - Presidential

	Precinct	Registered	Vote History	
Habig Ctr.	BAINBRIDGE 2E	856	512	59.81%
Habig Ctr.	BAINBRIDGE 2W	1414	1,103	78.01%
Habig Ctr.	BAINBRIDGE 3E	1126	788	69.98%
Habig Ctr.	BAINBRIDGE 3W	1107	874	78.95%
JCAC	BAINBRIDGE 1	569	467	82.07%
JCAC	BAINBRIDGE 4N	1126	785	69.72%
JCAC	BAINBRIDGE 4S	915	674	73.66%
JMS	BAINBRIDGE 5N	1075	638	59.35%
JMS	BAINBRIDGE 5S	975	606	62.15%
JMS	BAINBRIDGE 6N	994	678	68.21%
JMS	BAINBRIDGE 6S	1094	829	75.78%
JMS	BAINBRIDGE 7	717	504	70.29%
JMS	BOONE - JASPER	122	98	80.33%
JMS	HARBISON 1	607	438	72.16%
Holland	CASS 1	429	272	63.40%
Holland	CASS 3	643	496	77.14%
Ferdinand	FERDINAND 1	937	719	76.73%
Ferdinand	FERDINAND 2	693	474	68.40%
Ferdinand	FERDINAND 3	1150	885	76.96%
DMS	COLUMBIA 1	769	531	69.05%
DMS	HARBISON 2	586	410	69.97%
DMS	MARION 1	287	216	75.26%
St Anthony	JACKSON 1	741	561	75.71%
St Anthony	JACKSON 2	928	729	78.56%
St Anthony	JEFFERSON 1	834	622	74.58%
St Anthony	JEFFERSON 2	260	179	68.85%
St Marys	BOONE 1	573	445	77.66%
St Marys	MADISON 1	593	470	79.26%
St Marys	MADISON 2	1152	885	76.82%
St Marys	MADJAS NORTH	482	399	82.78%
St Marys	MADJAS SOUTH	86	72	83.72%
Celestine	HALL 1	938	733	78.14%
Celestine	MARION 2	764	593	77.62%
Hburg	CASS 2	510	371	72.75%
Hburg	PATOKA 1	969	632	65.22%
Hburg	PATOKA 2	1007	672	66.73%
Hburg	PATOKA 3	926	576	62.20%
Hburg	PATOKA 4	775	375	48.39%
Hburg	PATOKA 5	338	243	71.89%
Hburg	PATOKA 6	782	584	74.68%
		<b>30849</b>	<b>22137</b>	<b>71.76%</b>



2018 GENERAL - Mid Term

	Precinct	Registered	Vote History	
Habig Ctr.	BAINBRIDGE 2E	797	357	44.79%
Habig Ctr.	BAINBRIDGE 2W	1436	939	65.39%
Habig Ctr.	BAINBRIDGE 3E	1092	669	61.26%
Habig Ctr.	BAINBRIDGE 3W	1041	723	69.45%
JCAC	BAINBRIDGE 1	545	400	73.39%
JCAC	BAINBRIDGE 4N	1110	661	59.55%
JCAC	BAINBRIDGE 4S	943	583	61.82%
JMS	BAINBRIDGE 5N	1010	453	44.85%
JMS	BAINBRIDGE 5S	906	431	47.57%
JMS	BAINBRIDGE 6N	996	522	52.41%
JMS	BAINBRIDGE 6S	1064	693	65.13%
JMS	BAINBRIDGE 7	707	424	59.97%
JMS	BOONE - JASPER	91	59	64.84%
JMS	HARBISON 1	601	349	58.07%
Holland	CASS 1	431	211	48.96%
Holland	CASS 3	620	389	62.74%
Ferdinand	FERDINAND 1	919	574	62.46%
Ferdinand	FERDINAND 2	681	380	55.80%
Ferdinand	FERDINAND 3	1118	648	57.96%
DMS	COLUMBIA 1	756	382	50.53%
DMS	HARBISON 2	570	308	54.04%
DMS	MARION 1	289	165	57.09%
St Anthony	JACKSON 1	740	438	59.19%
St Anthony	JACKSON 2	903	553	61.24%
St Anthony	JEFFERSON 1	790	438	55.44%
St Anthony	JEFFERSON 2	262	141	53.82%
St Marys	BOONE 1	565	359	63.54%
St Marys	MADISON 1	586	360	61.43%
St Marys	MADISON 2	1084	705	65.04%
St Marys	MADJAS NORTH	430	290	67.44%
St Marys	MADJAS SOUTH	93	64	68.82%
Celestine	HALL 1	909	617	67.88%
Celestine	MARION 2	761	495	65.05%
Hburg	CASS 2	498	269	54.02%
Hburg	PATOKA 1	949	465	49.00%
Hburg	PATOKA 2	876	461	52.63%
Hburg	PATOKA 3	913	454	49.73%
Hburg	PATOKA 4	784	281	35.84%
Hburg	PATOKA 5	344	188	54.65%
Hburg	PATOKA 6	764	451	59.03%
	<b>DUBOIS COUNTY</b>		<b>17,349</b>	
	<b>TOTALS</b>	<b>29974</b>		<b>57.88%</b>

PRECINCT	POLL LOCATION
Bainbridge	ANY VOTE CENTER
Bainbridge 1	ANY VOTE CENTER
Bainbridge 2E	ANY VOTE CENTER
Bainbridge 2W	ANY VOTE CENTER
Bainbridge 3E	ANY VOTE CENTER
Bainbridge 3W	ANY VOTE CENTER
Bainbridge 4N	ANY VOTE CENTER
Bainbridge 4S	ANY VOTE CENTER
Bainbridge 5N	ANY VOTE CENTER
Bainbridge 5S	ANY VOTE CENTER
Bainbridge 6	ANY VOTE CENTER
Bainbridge 7	ANY VOTE CENTER
BNEJAS	ANY VOTE CENTER
Boone 1	ANY VOTE CENTER
Cass 1	ANY VOTE CENTER
Cass 2	ANY VOTE CENTER
Cass 3	ANY VOTE CENTER
Columbia 1	ANY VOTE CENTER
Ferdinand 1	ANY VOTE CENTER
Ferdinand 2	ANY VOTE CENTER
Ferdinand 3	ANY VOTE CENTER
Hall 1	ANY VOTE CENTER
Harbison 1	ANY VOTE CENTER
Harbison 2	ANY VOTE CENTER
Jackson 1	ANY VOTE CENTER
Jackson 2	ANY VOTE CENTER
Jefferson 1	ANY VOTE CENTER
Jefferson 2	ANY VOTE CENTER
Madison 1	ANY VOTE CENTER
Madison 2	ANY VOTE CENTER
MADJAS N	ANY VOTE CENTER
MADJAS S	ANY VOTE CENTER
Marion 1	ANY VOTE CENTER
Marion 2	ANY VOTE CENTER
Patoka 1	ANY VOTE CENTER
Patoka 2	ANY VOTE CENTER
Patoka 3	ANY VOTE CENTER
Patoka 4	ANY VOTE CENTER
Patoka 5	ANY VOTE CENTER
Patoka 6	ANY VOTE CENTER

## VOTE CENTER AND SATELLITE VOTE LOCATIONS

Effective for the 2022 Primary Election, Dubois County plans to utilize 10 vote center locations.

Indiana Code 3-1-18.1-6 requires one vote center per 10,000 active voters, but the Dubois County Election Board plans to provide one vote center per roughly 3,000 active voters.

Current Voter Count:

- (A) Total number of registered voters within Dubois County – 30,057
- (B) Total number of active voters within Dubois County – 28,748
- (C) Total number of inactive voters within Dubois County – 1,309

The following are suggested vote center locations to be open on Election Day from 6 a.m. to 6 p.m. in a Presidential and Mid-Term Election cycle. (The following locations will be reviewed and amended prior to each election cycle as needed.)

1. Jasper Middle School, 1600 St Charles St., Jasper, IN 47546
2. Thyen-Clark Cultural Center-Atrium, 100 3<sup>rd</sup> Ave., Jasper, IN 47546
3. St Mary's Community Center, 2829 N 500 W, Jasper, IN 47546
4. Huntingburg Event Center, 110 East 14<sup>th</sup> St., Huntingburg, IN 47542
5. Holland United Methodist Church, 205 2<sup>nd</sup> Ave., Holland, IN 47541
6. Tri-County YMCA, 131 E 16<sup>th</sup> St., Ferdinand, IN 47532
7. Celestine Community Center, 7742 E Ellsworth Rd., Celestine, IN 47521
8. St. Anthony Community Center, 4665 S Cross St., St Anthony, IN 47575
9. Dubois Ruritan Park, 3895 N State Road, Dubois, IN 47527

Per I.C. 3-11-10-26 absentee voting will begin twenty-eight (28) days prior to Election Day at the Dubois County Courthouse Annex and there will be two (2) satellite centers open on two (2) Saturdays before Election Day. The suggested satellite voter center locations to be open two Saturdays prior to Election Day from 8:00 a.m. to 3:00 p.m. are:

1. Tri-County YMCA, 131 E. 16<sup>th</sup> St., Ferdinand, IN 47532
2. Huntingburg Event Center, 110 East 14<sup>th</sup> St., Huntingburg, IN 47542

Additional absentee voting locations will be available:

1. 35<sup>th</sup> Str. Fire Station, Jasper – two (2) Saturdays prior, and the full week prior to Election Day.
2. Roaming Board: the week prior to Election Day:
  - a. Monday, St. Henry CK of A, 1266 W 1100 S, Ferdinand, IN 47532
  - b. Tuesday, Haysville Fire Station, 195 W, IN-56, Jasper, IN 47546
  - c. Wednesday, Schnellville Fire Station, 8090 E Schnellville Rd., Schnellville, IN 47580
  - d. Thursday, Dubois Library, 5506 E Main St., Dubois, IN 47527
  - e. Friday, Birdseye Fire Station, First & Cherry St., Birdseye, IN 47513

The following are suggested vote center locations to be open on Election Day from 6 a.m. to 6 p.m. in a Municipality Election cycle. (The following locations will be reviewed and amended prior to each election cycle as needed.)

1. Jasper Middle School, 1600 St Charles St., Jasper, IN 47546
2. Thyen-Clark Cultural Center Atrium, 100 3<sup>rd</sup> Ave., Jasper, IN 47546
3. St Mary's Community Center, 2829 N 500 W, Jasper, IN 47546
4. Huntingburg Event Center, 110 East 14<sup>th</sup> St., Huntingburg, IN 47542
5. Holland United Methodist Church, 205 2<sup>nd</sup> Ave., Holland, IN 47541
6. Tri-County YMCA, 131 E 16<sup>th</sup> St., Ferdinand, IN 47532

Per I.C. 3-11-10-26 absentee voting will begin twenty-eight (28) days prior to Election Day at the Dubois County Courthouse Annex and there will be two (2) satellite centers open on the two (2) Saturdays before Election Day. The suggested satellite voter center locations to be open two Saturdays prior to Election Day from 8:00 a.m. to 3:00 p.m. are:

1. Tri-County YMCA, 131 E 16<sup>th</sup> St., Ferdinand, IN 47532
2. Huntingburg Event Center, 110 East 14<sup>th</sup> St., Huntingburg, IN 47542

Additional absentee voting location will be available:

3. 35<sup>th</sup> St. Fire Station, Jasper – two (2) Saturdays prior, and the full week prior to Election Day.

**NOTE:** Voters from every precinct may vote at any location or satellite vote enter location. Every ballot style for each precinct in Dubois County will be available at each vote center and each satellite vote center. Depending on the election, the number of ballot styles varies greatly; therefore, this plan does not attempt to provide a specific number of ballot styles.

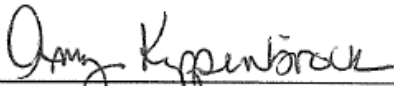
## Certification of ADA Compliance

Whereas, Indiana Code 3-11-18.1-4(14) requires certification that Vote Centers and Satellite Early Voting Locations are accessible,

Whereas, the Dubois County Election Board unanimously certifies that all voting sites are accessible under Indiana Code 3-11-18.1,

BE IT SO CERTIFIED BY THE DUBOIS COUNTY ELECTION BOARD, this

18<sup>th</sup> day of August, 2021.

  
Name: Amy Kippenbrock

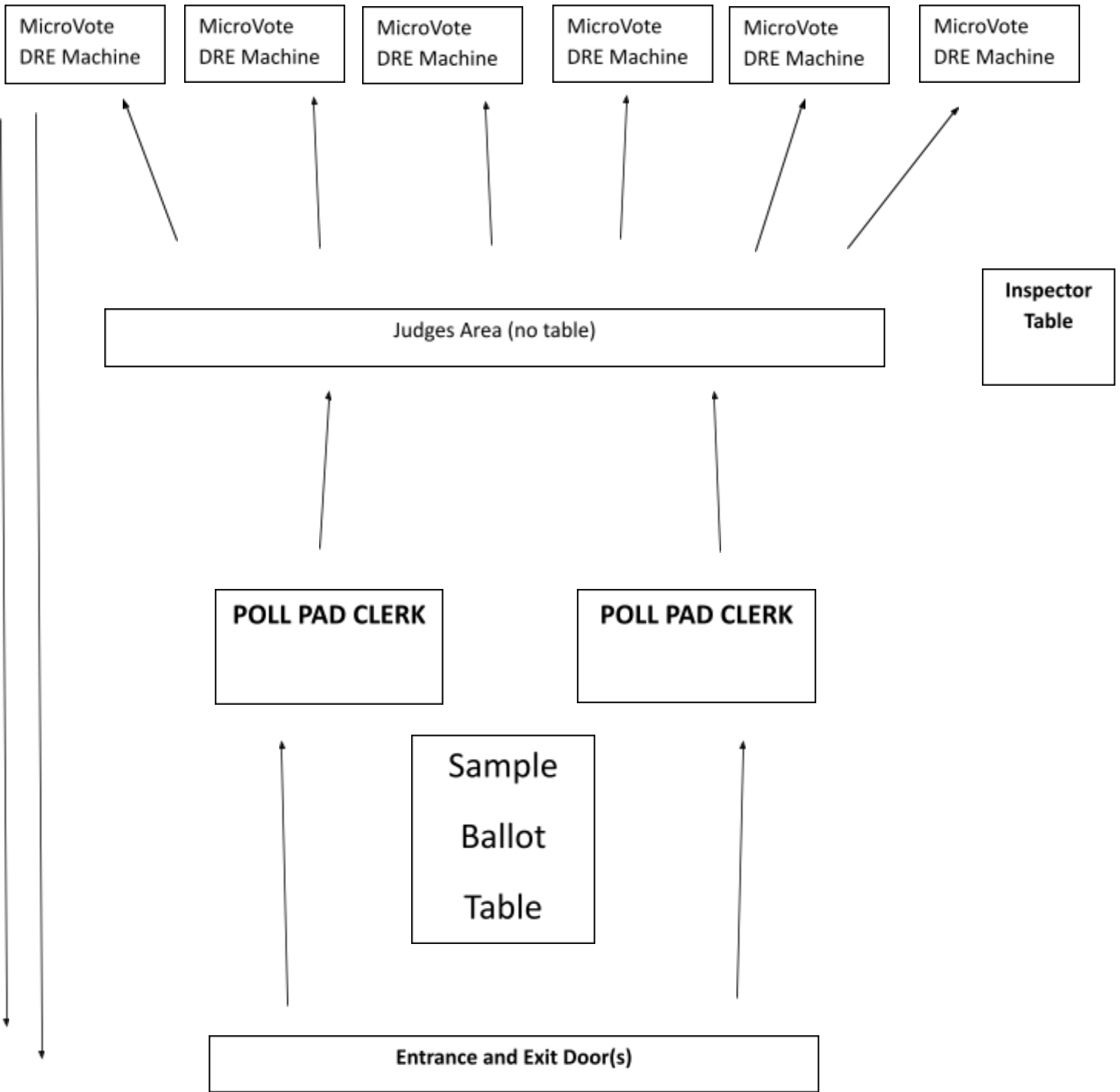
  
Name: Roger Messmer

  
Name: John Birk

## **VOTE CENTER FLOW CHART**

Each vote center and satellite vote center will be connected to all other vote centers or satellite vote centers in Dubois County as well as to the Dubois County Clerk's office in the courthouse via ePollbook connected via secured internet lines. At least two electronic poll book terminals will be available at each location with more at some locations as deemed necessary.

On election day there will be a minimum of four (4) voting machines at each Vote Center and it will be determined where additional machines should be located.



\* This layout of a Vote Center will vary depending on the election for which it is being used. The number of machines utilized will vary at Satellite Early Voting Locations.

## **POLL WORKERS**

Each satellite early voting location there will be a minimum of a team of two (2) bipartisan workers. Each election day location, depending on election, will also have at least one precinct election board, comprised of one (1) Inspector, two (2) bipartisan Judges and two (2) bipartisan Clerks, additionally we will have one (2) Election Sheriffs at the Jasper Middle School location and additional poll workers added as necessary. Poll workers will be chosen by each Party Chairman/woman.

Just as the needed number of Vote Centers on any given election, may vary, so can the needed number of staffs to run them. If the need arises, additional bipartisan teams will be added to a Vote Center.

The training procedures for poll workers will remain largely the same. Lack of participation in poll worker training will result in removal of that individual from being a poll worker for that election.

The Republican and Democrat party chairs are to provide a list of potential poll workers to the County Clerk's office to establish a pool of poll workers that can be drawn from. This list shall be delivered by the deadline established by the State to allow sufficient time for training. If the Clerk does not receive the list of potential poll workers by the deadline, the Clerk shall contact and assign poll workers as needed.

The Inspector will also serve as the greeter and verify that the voter has his/her government issued photo identification. Voters will proceed to a team of Poll Clerks who will access the individual's voter profile via an ePollbook equipped with a scanner to read the voter's ID card. Once verified, the voter will sign the signature line and be given a printed label to hand to the Judge.

The voter will be instructed to proceed to the Judge's lane. The Clerk will document any necessary information into the poll pad as required by statute. The Judge will receive the printed label and proceed to the Infinity voting machine. The printed label will indicate which ballot the voter is to receive. The judge will then active the MicroVote Infinity machine and select the appropriate ballot in order to verify it with the voter. The voter will then proceed with voting on the Infinity machine in the same manner as always. The Judge will keep the printed label in a small basket which will serve as a hard copy documentation (the poll list) that the voter had voted in addition to the electronic information.

## TECHNOLOGY

Dubois County will continue to use the MicroVote Infinity machines which will be programmed and publicly tested by the Dubois County Election Board and will include all ballot styles and variations.

Sample paper ballots will also be provided to the Inspector of each Vote Center to allow voters to view their paper ballot prior to casting their vote.

The voting machines will be distributed to each Satellite and Vote Center the evening before the start of voting at their assigned location.

In addition, those voting by mail will continue to use Optical Scan Ballots, which are completed and placed in secure sealed envelopes and kept in a locked filing cabinet until tabulation of results begins on Election Day. Dubois County is an Absentee Central Count County; therefore, the absentee ballots will remain in the locked filing cabinet until the process begins on Election Day.

The Poll Pad from KnowInk will be used for all electronic poll book services. Each Vote Center and Satellite Early Voting Location will be connected to all other Vote Centers, Satellite Early Voting Locations and the County Election Board by electronic Poll Pad. At least one Poll Pad 16gb iPad Air, swivel stand, stylus, charger and Star Micronic Bluetooth Printer will be available at each location.

Jet Packs will be provided for any voting location that has no or slow internet connection access.

The hardware, software and firmware used for the poll pad will be utilizing the KNOW.INK Poll Pad. The Poll Pad ePoll Book application software runs on the Apple iPad tablet. This system is currently certified by the Indiana Secretary of State's Office. The operating system holds the highest security certification from NIST-FIPS 140-2. The Poll Pad system interfaces with the Civix Indiana State Voter Registration System as part of the certified system.

As always, properly secured paper and provisional ballots will be delivered to each Vote Center as part of the kit provided to the inspectors of each location.

## **SECURITY & CONTINGENCY PLAN**

In a situation where there is the loss of connection between electronic poll books and the central server:

The Poll Pad will have both a high-speed internet connection via the Vote Center's own internet service provider, and a high-speed cellular connection via a Jet Pack.

In a situation where there is a loss of power to a Vote Center:

Both the Poll Pads and the Infinity Panels used at the Vote Centers have battery backups. This would allow a Vote Center to keep functioning through a temporary power loss. However, if the power at a Vote Center would be lost for more than a temporary interruption, the Election Board could shut down that Vote Center and voters would be directed to other Vote Center locations until power could be restored. If necessary, an additional Vote Center location could be established to meet the needs of voters.

In a situation where there is a wide spread disaster in Dubois County:

If something catastrophic would happen, the Election Board will work closely with both Emergency Management Director and the State Election Division in determining the appropriate response to the situation.

RESOLUTION NO. 2021- 24

**RESOLUTION OF THE BOARD OF COMMISSIONERS  
OF DUBOIS COUNTY, INDIANA APPROVING DUBOIS COUNTY'S  
DESIGNATION AS A VOTE CENTER COUNTY**

WHEREAS, Indiana Code § 3-11-18.1, et seq. allows Indiana counties to adopt a vote center model; and

WHEREAS, the Board of Commissioners of Dubois County, Indiana approves the designation of Dubois County, Indiana as a vote center county; and

WHEREAS, the Dubois County Election Board has the responsibility for properly drafting a vote center plan for Dubois County, Indiana, which will take effect upon unanimous vote of the Dubois County Election Board and having the plan properly filed with the Indiana Election Division.

NOW, THEREFORE, BE IT RESOLVED BY THE BOARD OF COMMISSIONERS OF DUBOIS COUNTY, INDIANA, that Dubois County, Indiana is designated and approved to operate as a vote center county, upon the required approval by the Dubois County Election Board and filing of the county vote center plan with the Indiana Election Division.

Adopted this 21<sup>st</sup> day of June, 2021.

BOARD OF COMMISSIONERS OF  
DUBOIS COUNTY, INDIANA



CHAD BLESSINGER, President



ELMER BRAMES, Commissioner



NICK HOSTETTER, Commissioner

ATTEST:



SANDRA L. MORTON, AUDITOR OF  
DUBOIS COUNTY, INDIANA

**RESOLUTION NO. 2021-26**

**RESOLUTION OF THE COUNTY COUNCIL  
OF DUBOIS COUNTY, INDIANA  
APPROVING THE DESIGNATION AS A VOTE CENTER COUNTY**

WHEREAS, Indiana Code § 3-11-18.1, et seq. allows Indiana counties to adopt a vote center model; and

WHEREAS, the County Council of Dubois County, Indiana approves the designation of Dubois County, Indiana as a vote center county; and


WHEREAS, the Dubois County Election Board has the responsibility for properly drafting a vote center plan for Dubois County, Indiana, which will take effect upon unanimous vote of the Dubois County Election Board and having the plan properly filed with the Indiana Election Division.

NOW, THEREFORE, BE IT RESOLVED BY THE COUNTY COUNCIL OF DUBOIS COUNTY, INDIANA, that Dubois County, Indiana is designated and approved to operate as a vote center county, upon the required approval by the Dubois County Election Board and filing of the county vote center plan with the Indiana Election Division.

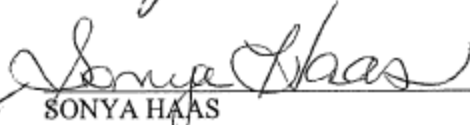
Adopted this 28<sup>th</sup> day of June, 2021.

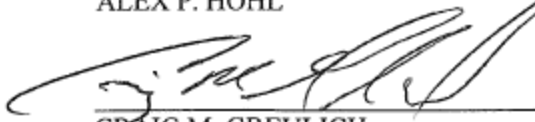
COUNTY COUNCIL OF DUBOIS COUNTY, INDIANA

  
MICHAEL KLUESNER, President

  
DOUG MUEBELHOR

  
ALEX P. HOHL

  
SONYA HAAS

  
CRAIG M. GREULICH

  
MARY E. BECKMAN

  
CHARMIAN R. KLEM

ATTEST:

  
SANDRA L. MORTON, AUDITOR OF DUBOIS COUNTY, INDIANA

**DUBOIS COUNTY ELECTION BOARD**

**Order 2021 - \_\_\_\_\_**

**Whereas**, Indiana Code 3-11-18.1 grant permission for any Indiana County that so chooses to implement vote centers in its county and,

**Whereas**, the Dubois County Election Board so approves the Dubois County plan for the implementation of the vote center model in Dubois County, Indiana.

**BE IT THEREFORE ORDERED BY THE DUBOIS COUNTY ELECTION BOARD:**

The Election Board of Dubois County adopts this Order to approve the County Vote Center Plan which is incorporated in this Order by reference.

Adopted this \_\_\_\_\_ DAY OF \_\_\_\_\_, 2021.

**DUBOIS COUNTY ELECTION BOARD**

\_\_\_\_\_  
Roger Messmer, President

\_\_\_\_\_  
John Birk, Member

\_\_\_\_\_  
Amy Kippenbrock, Secretary